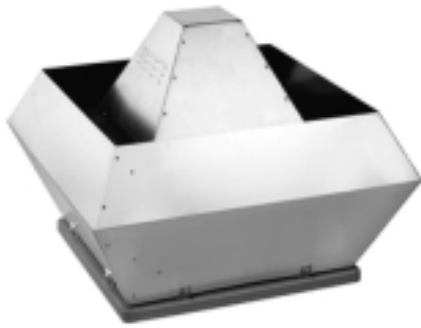


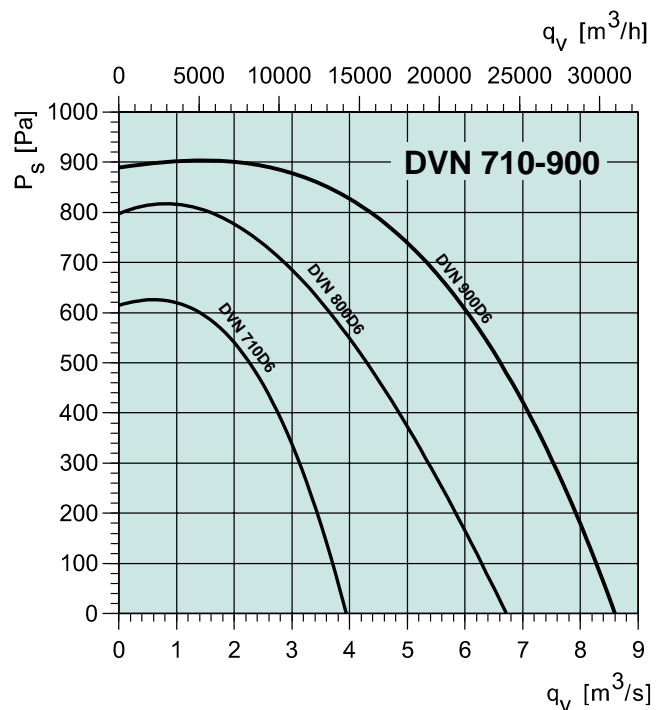
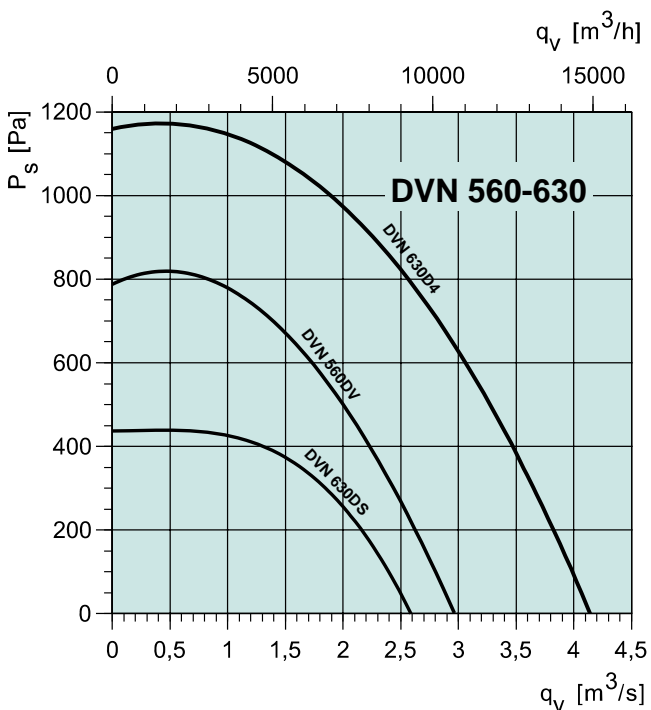
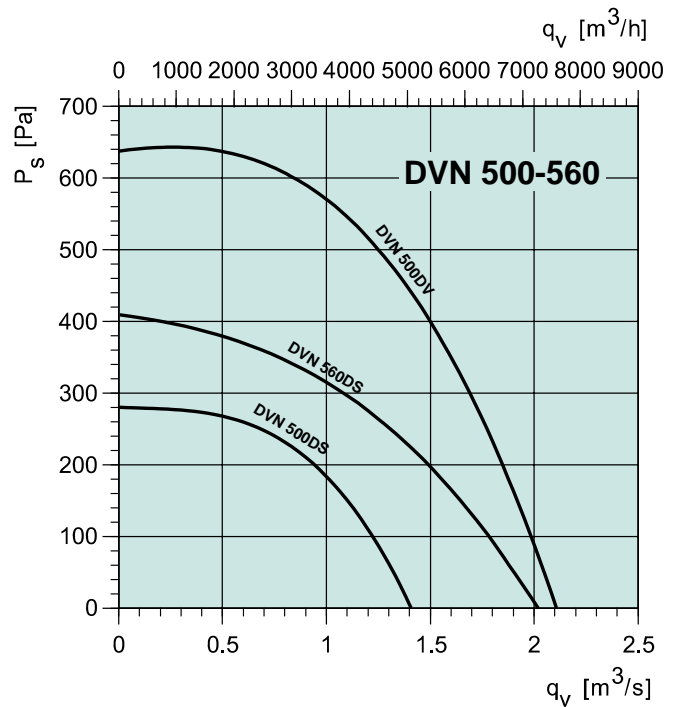
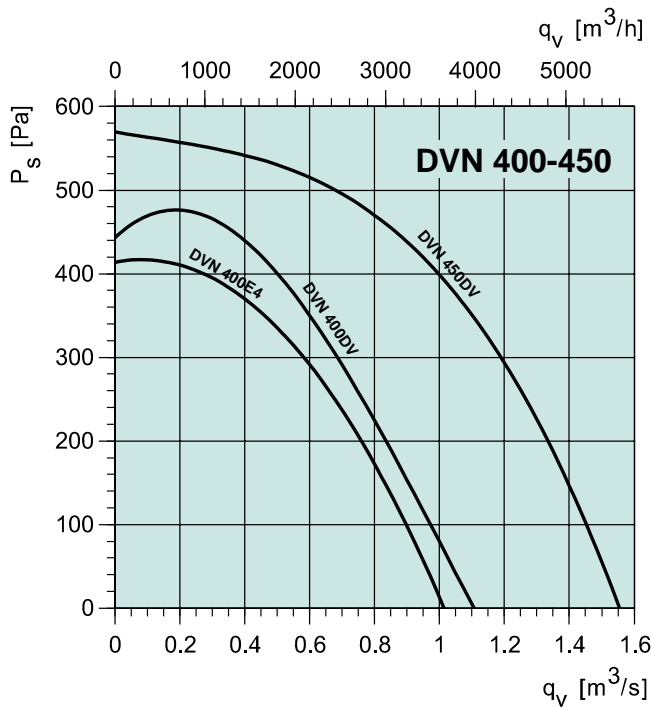
DVN



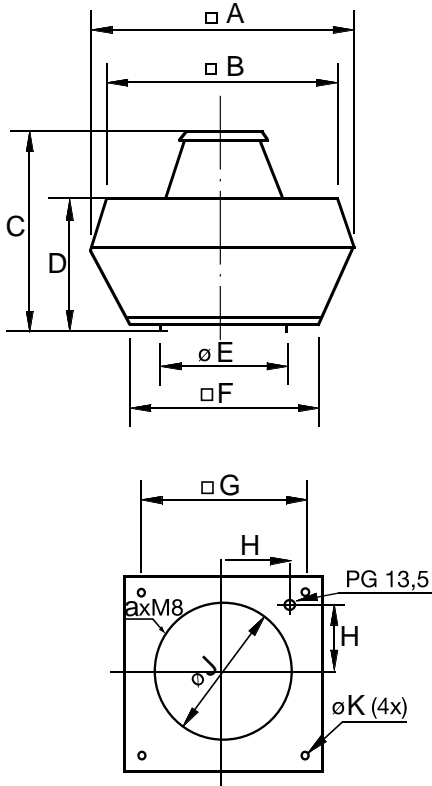
- De 0 à 31500 m³/h
- Fonctionnement 120° C permanent
- Utilisable en ambiance marine
- Faible niveau sonore

COURBES DEBIT/PRESSION

ventilateurs et tourelles



DIMENSIONS



Dim DVN	A	B	C	D	E	F	G	H	J	K	a
DVN400	720	618	720	400	438	595	450	200	438	12	6
DVN450/500	900	745	900	440	438	665	535	237	438	12	6
DVN560/630	1150	1013	900	560	605	939	750	293	605	14	8
DVN710	1350	1178	936	690	674	1035	840	320	674	14	8
DVN800/900	1700	1471	1180	845	872	1250	1050	433	872	14	8

CARACTERISTIQUES TECHNIQUES

DVN	Tension	Puiss	Intensité	m ³ /h	t/min	Temp maxi °C	IP	dB(A)	Poids	Classe	Var manuel	Var 5 vit	Sélecteur 2 vitesses	Var auto	Protection
400E4	230~	370	2,00	3600	1420	120	54	51/43	33	F	VV14	RTR3	VVD4	S2006	STET10B
400DV	400 3~	370	1,40	3850	1420	120	54	51/43	33	F	PKDT5	RTRD2	SDM250B	PKDT5	STDT16
450DV	400 3~	750	2,50	5800	1350	120	54	51/43	38	F	PKDT5	RTRD4	SDM250B	PKDT5	STDT16
500DV	400 3~	1500	4,30	7800	1330	120	54	54/46	49	F	PKDT5	RTRD7	SDM250B	PKDT5	STDT16
500DS	400 3~	550	2,35	5000	850	120	54	40/32	48	F	PKDT5	RTRD4	SDM250B	PKDT5	STDT16
560DV	400 3~	2200	5,80	10800	1400	120	54	55/47	58	F	PKDT12	RTRD7	SDM250B	PKDT12	STDT16
560DS	400 3~	750	2,10	7500	850	120	54	45/37	57	F	PKDT5	RTRD4	SDM250B	PKDT5	STDT16
630D4	400 3~	4000	9,20	14900	1435	120	54	64/56	65	F	X	X	X	X	X
630DS	400 3~	1500	4,80	9200	940	120	54	49/41	65	F	PKDT5	RTRD7	SDM250B	PKDT5	STDT16
710D6	400 3~	2200	5,70	16400	945	120	54	63/55	88	F	X	X	X	X	X
800D6	400 3~	4000	9,30	24000	940	100	54	61/53	200	F	X	X	X	X	X
900D6	400 3~	7500	16	31500	740	100	54	69/61	242	F	X	X	X	X	X

Référence | Prix
€uros

Tourelles 120 °C permanent	
DVN 400DV	1 167,60
DVN 400E4	1 223,60
DVN 450DV	1 394,40
DVN 500DS	1 486,80
DVN 500DV	1 495,20
DVN 560DS	1 926,40
DVN 560DV	1 898,40
DVN 630D4	2 041,20
DVN 630DS	2 063,60
DVN 710D6	2 878,40
DVN 800D6	7 585,20
DVN 900D6	8 234,80

Coupeure de proximité
CLPROX ● 61,30

Protection thermique Monophasé	
STET-10 B	● 82,40
Triphasé	
STDT-16	● 179,60

Variateurs de vitesse monophasés	
VN1.5	● 69,30
VV14	● 179,70
RE 1,5	● 149,00
RTR3	● 213,70
S2006P	● 1 033,90
S2006T	● 699,40
S2006Z	● 635,60
S2010P	● 1 097,60
S2010T	● 875,60

Variateurs de vitesse triphasés	
PKDT5	● 915,45
PKDT12	● 1 393,25
RTRD 2	● 381,60
RTRD 4	● 559,70

● Produit en stock